

Side-arms and floodplains along large rivers

LIFE+ Project Closing Conference

19th November 2013, Mohács

Georg Frank

DANUBEPARKS Project Manager

www.danubeparks.org

g.frank@donauauen.at

WILDisland

The DANUBEPARKS Initiative
for a Danube Wild Island Corridor



- | | | | | | | | | |
|---|--------------------------------|--|--------------------------------------|---|---|--------------------------------|--|------------------------------|
| 1 Danube Delta
Biosphere
Reserve | 2 Lower Prut
Nature Reserve | 3 Lower Prut
Floodplain
Natural Park | 4 Kalimok-Brushlen
Protected Site | 5 Rusenski Lom
Nature Park | 6 Persina
Nature Park | 7 Đerdap
National Park | 8 Lonjsko Polje
Nature Park | 9 Kopački rit
Nature Park |
| 10 Gornje Podunavlje
Special Nature
Reserve | 11 Duna-Dráva
National Park | 12 Duna-İpoly
National Park | 13 Fertő-Hanság
National Park | 14 Dunajské Luhy
Protected
Landscape Area | 15 Záhorie
Protected
Landscape Area | 16 Donau-Auen
National Park | 17 Donauauwald
Neuburg-
Ingolstadt | |



Donau-Auen National Park/Austria



Duna-Drava National Park/Hungary





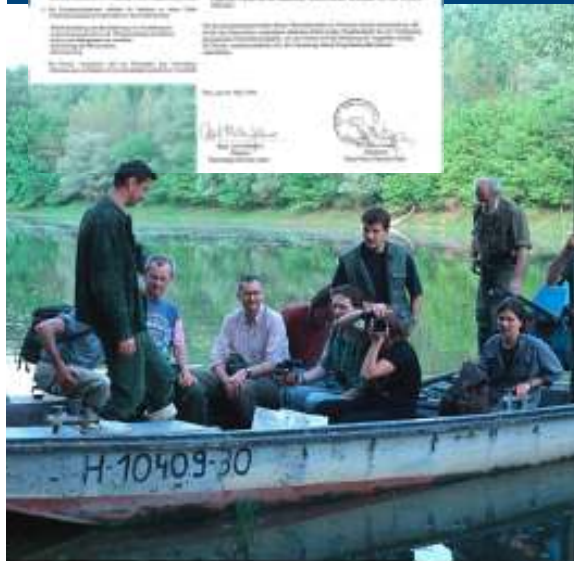
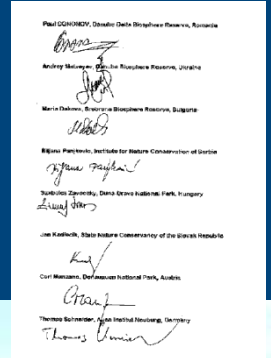
Kopacki rit Nature Park/Croatia

Danube Delta Biosphere Reserve/Romania



DANUBEPARKS –

from bilateral co-operations to Danube-wide perspectives



1990ies: bilateral co-operations

2000ies: Cross-border projects

2007: Declaration of Tulcea



Habitat Management & River Morphology



Excavator working on a rocky riverbank.



DANUBE PARKS
network of protected areas



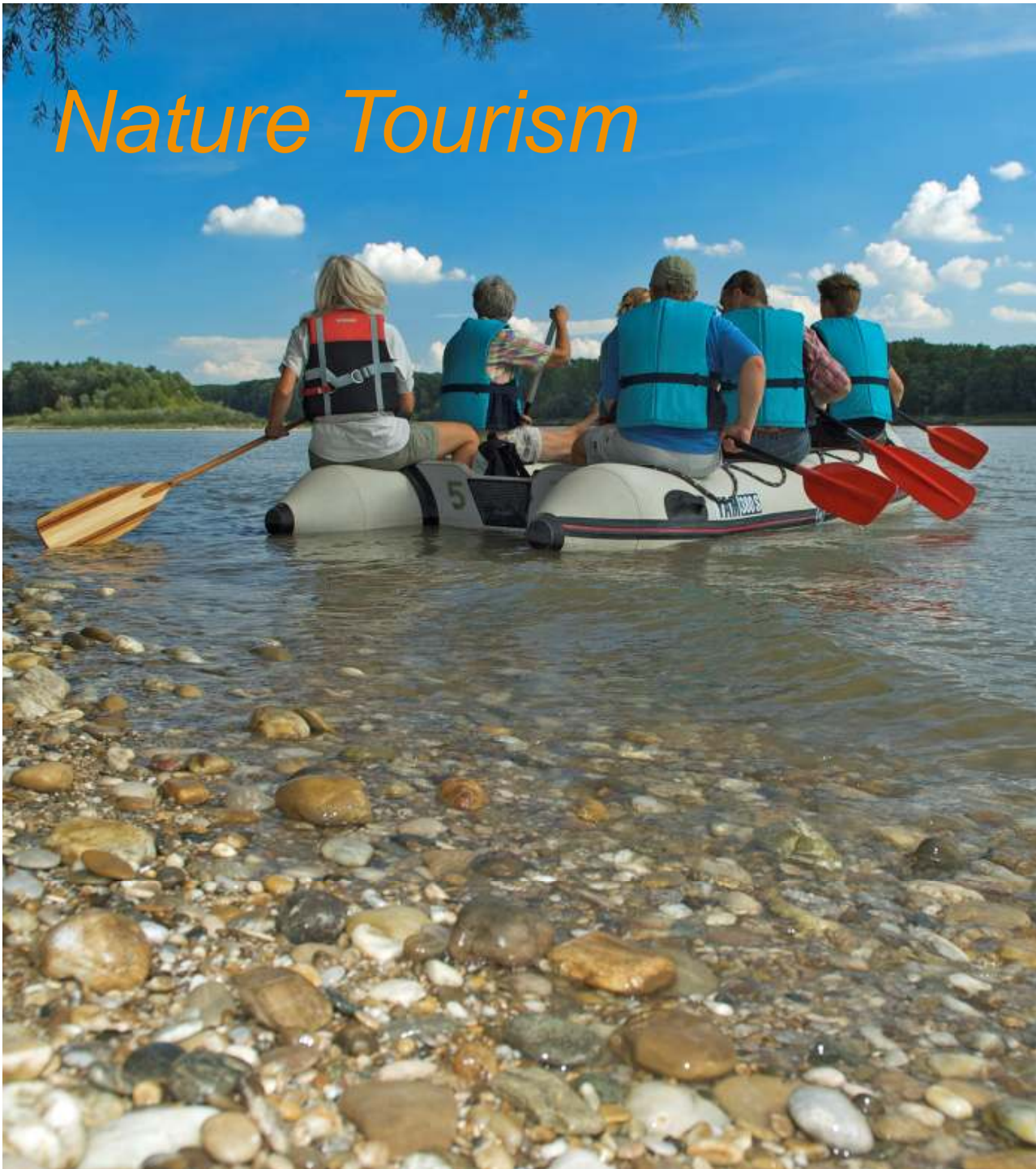
Flagship Species

A collage of small, square images on a green background. The images include a waterfall, a dog, a cat, a bird, and other natural scenes. Below the collage, there is text in a white box.

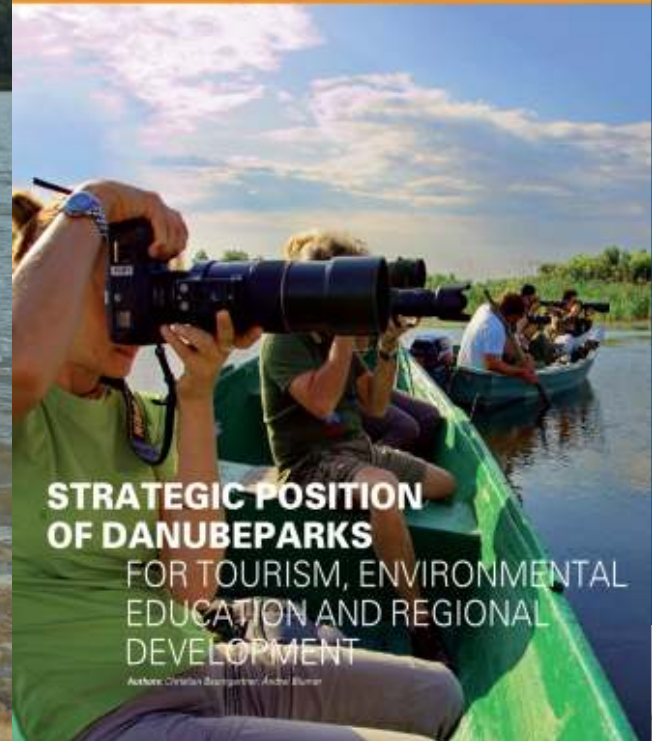
Action Plan
for the conservation
of the White-tailed Sea Eagle
(*Haliaeetus albicollis*)
along the Danube



Nature Tourism



- 1. Danube Delta Biosphere Reserve
- 2. Bukarra Nature Reserve
- 3. Kalamak Biosphere Protected Site
- 4. Puzosani Corn Nature Park
- 5. Pannonski National Park
- 6. Dunajski National Park
- 7. Gornji Podunavlje Biosfera Nature Reserve
- 8. Krupaški National Park
- 9. Ljubanjski Nature Park
- 10. Dava Biosphere National Park
- 11. Dava Biosphere National Park
- 12. Dječji vrtići Podunavlje Landscape Area
- 13. Zlatibor Protected Landscape Area
- 14. Dava Biosphere National Park
- 15. Danubius Biosphere Reserve



**STRATEGIC POSITION
OF DANUBE PARKS**
FOR TOURISM, ENVIRONMENTAL
EDUCATION AND REGIONAL
DEVELOPMENT

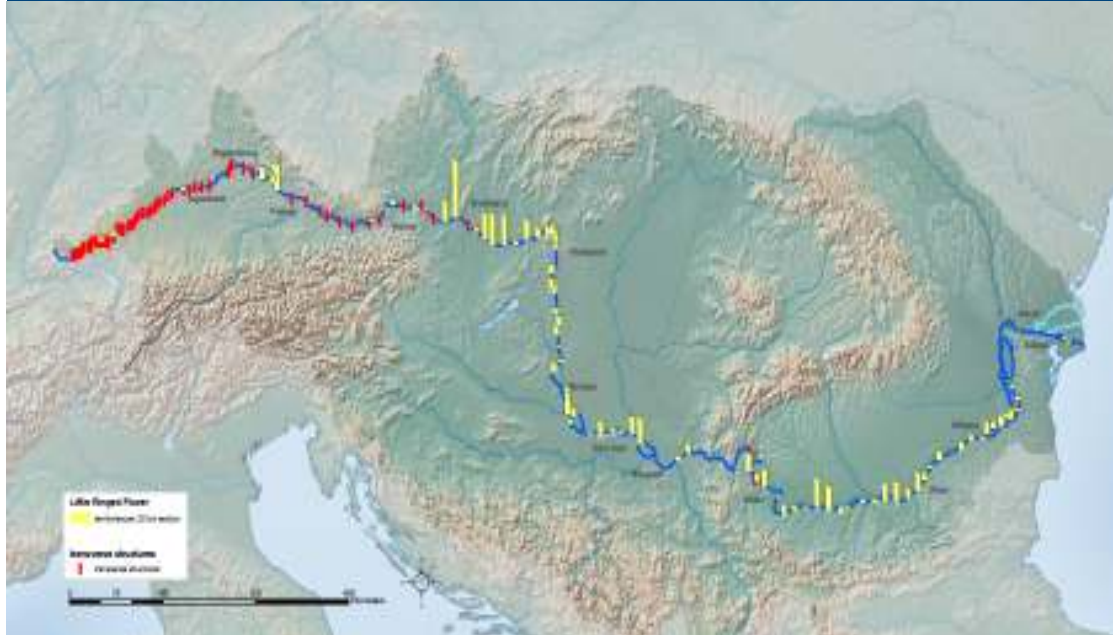
Authors: Christian Benschmann/Andreas Bunnar



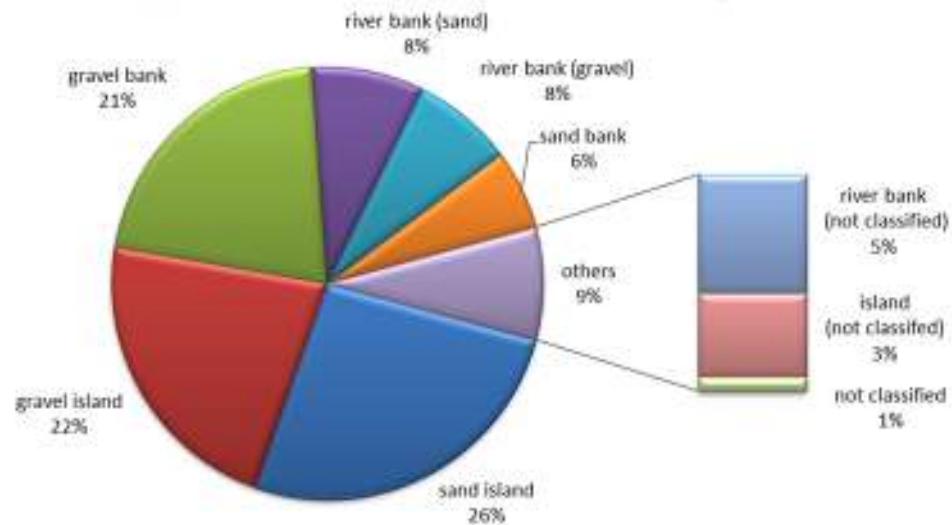
DANUBE PARKS - Danube-wide “Flagship Project”



DANUBE PARKS in ICPDR Joint Danube Survey

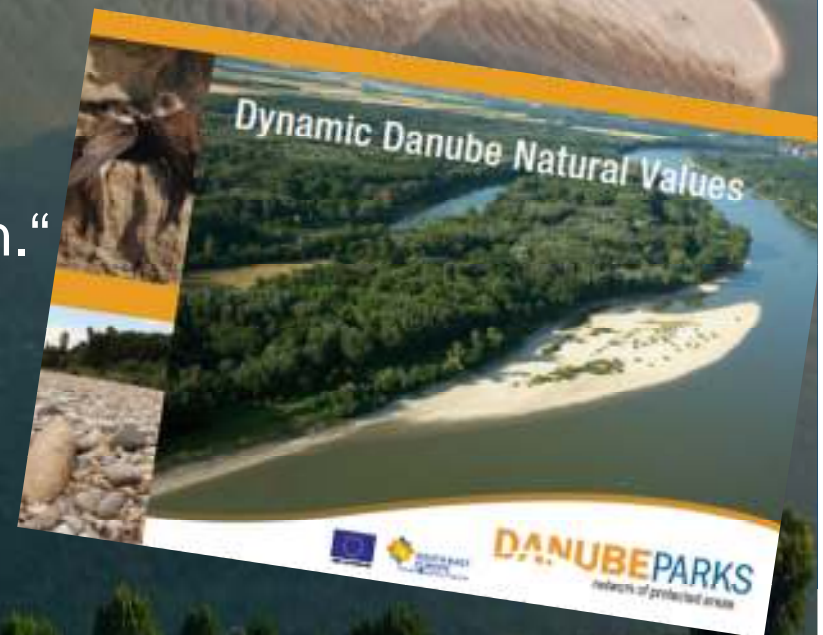


types of breeding habitat of Little Ringed Plover

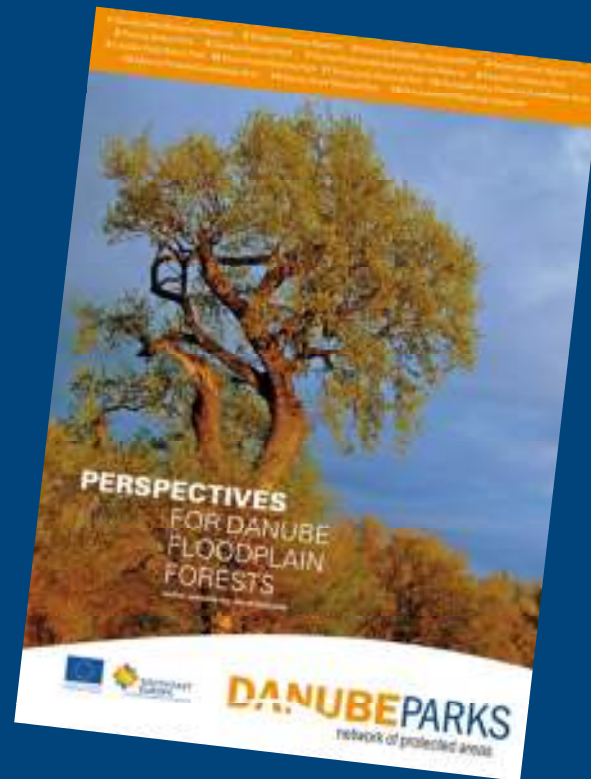


„Gravel and sand islands are **key habitats** in the Danube ecosystem!“

„... building up a **network of protected islands** is seen as a relevant contribution.“



„Habitat Corridor: ...Prioritization of **Danube Islands as stepping stones** with the aim of promoting the connectivity of Protected Areas “



An aerial photograph of a land corridor, likely a wildlife corridor, highlighted in a light tan color against a dark background. The corridor is irregularly shaped and runs from the top left towards the bottom right. It features a small, dark, irregularly shaped area in the lower-left portion, possibly a wetland or a specific habitat. The surrounding area is dark, suggesting a forest or a night-time aerial view.

*WILD*isLAND

A first draft concept for a
Danube Wild Island Corridor

Is it realistic?

- **Common management vision** easy to define
(= wilderness, non intervention)
- **Public land**
- **Only few landowners/users/managers**
- **Low (commercial) interest**
- **Interest / willingness by landmanagers**
- **Good moment for Danube-wide cross-sectorial co-operation**



STEP 1: Criterias defined



- all Danube islands with actual/short-term potential for „Wilderness“
- no infrastructure
- no agricultural land (meadows, fields etc.)
- no largerer forest plantations

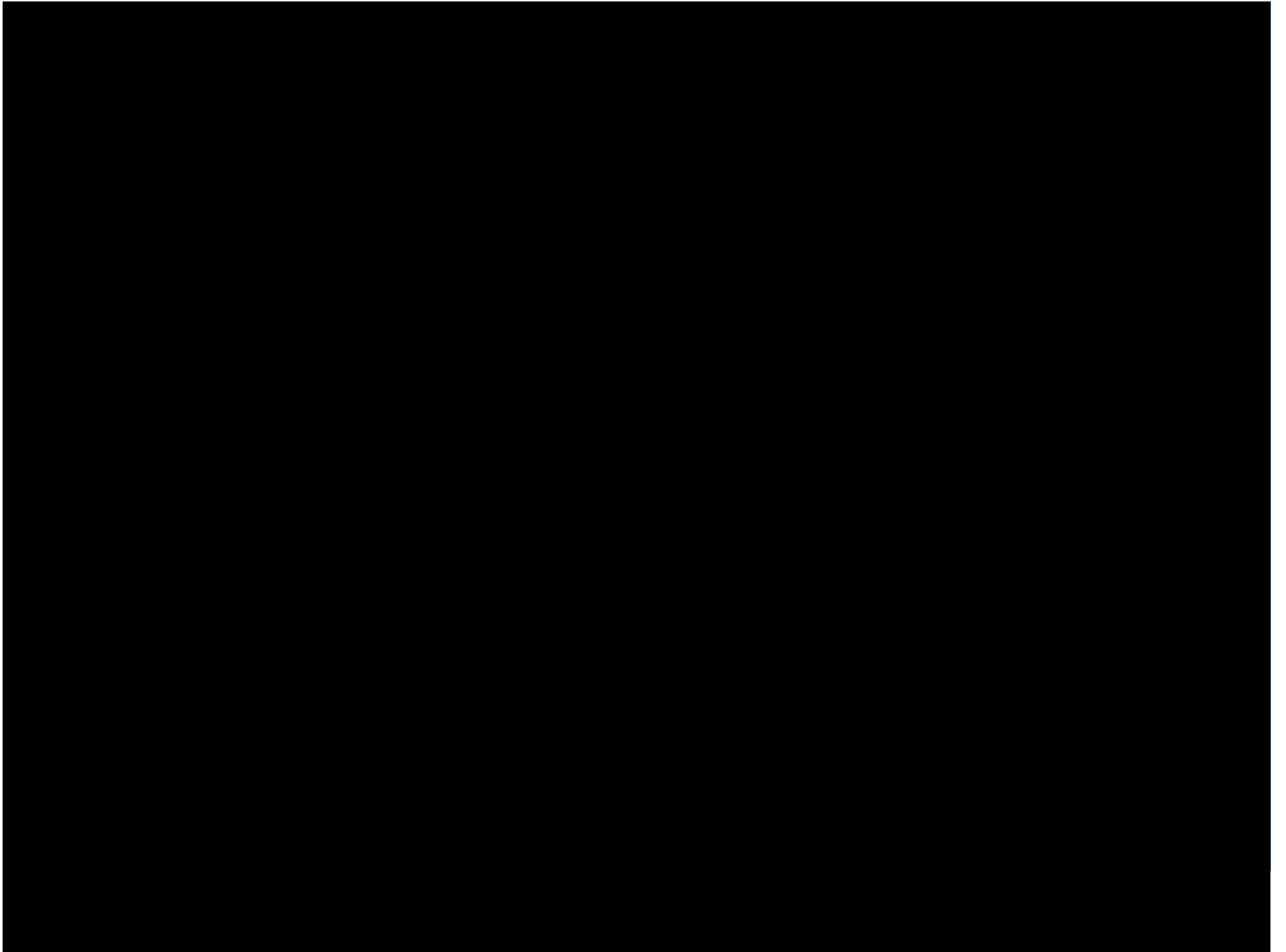
WILDiSLAND



STEP 2: Mapping

- Digitalization based on google earth





STEP 3: Results

- 529 Danube islands included in the concept
- Total area: 9526 hectares
- Size: differences in sections (average size of islands: 18 hectares)

Country	No. Islands	Hectares
Germany	65	116
Austria	56	189
Slovakia	19	165
Hungary	120	1170
Croatia	30	693
Serbia	56	730
Bulgaria	65	2155
Romania	117	4276
Ukraine	1	16
Total	529	9527

STEP 4: Realization

Cross-sectorial approach !!!



Cross-sectorial Conference NEWADA duo & DANUBEPARKS (Oct. 2013, Hainburg)

STEP 4: Realization

development & drafting WILDisland initiative (2012/2013)

cross-sectorial discussion process (2013)

expression of support by international institutions (2013)
(e.g. EU Strategy Danube Region, ICPDR)

harmonization on national level &
elaboration of detailed documents (2013/2014)

cross-sectorial tuning on Danube-wide level &
elaboration of „Letter of Commitment“ (2013/2014)

Sept. 2014: joint signing of the Commitment

preparation of cross-sectorial Danube-wide follow-up projects



What could be the added value of a Danube Wild Island Corridor?

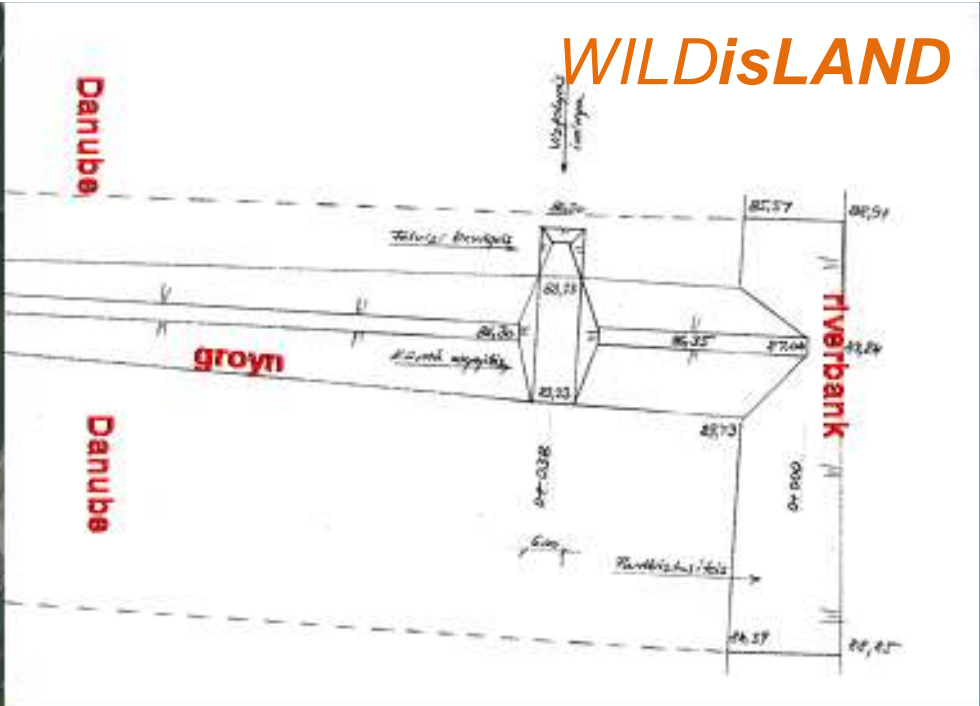
impact	Sector	Nature Conservation	Waterway Administrations	Forestry
Increase habitat quality		++	+	+
Statement for Wilderness		++	+	+
Best practice cross-sectorial cooperation		+	++	++
Reduction of maintenance costs			+(+)	
Public relations		+	++	++
Additional field of activity		+	++	++
Follow-up projects		+	++	++
Loss of income				-

Examples for WILDisland implementation



Austria, Donau-Auen National Park & via donau (Austria's waterway company)

WILDIsLAND



Hungary, Duna-Drava National Park & ADUVIZIG
(Lower Danube Valley Water Management Directorate)

WILD*is*LAND



Let's go together towards its implementation!

Little Tern (*Sterna albifrons*) – last breeding pairs on very few Danube islands